

# Effective Rural Education for the Twenty-First Century

Roger D. Breed, Ed.D.  
Commissioner of Education

April 3, 2013  
Omaha, Nebraska



**NEBRASKA**  
*DEPARTMENT OF*  
**EDUCATION**



Friday, April 3, 2013

# Agenda

August						
				1	2	
3	4	5	6	7	8	9
10	11	12	13	14	15	16
17	18	19	20	21	22	23
24	25	26	27	28	29	30
31						

September						
1	2	3	4	5	6	
7	8	9	10	11	12	13
14	15	16	17	18	19	20
21	22	23	24	25	26	27
28	29	30				

October						
		1	2	3	4	
5	6	7	8	9	10	11
12	13	14	15	16	17	18
19	20	21	22	23	24	25
26	27	28	29	30	31	

- 8 **1.** Context of Rural Education
- 9
- 10 **2.** Focusing on Student Learning
- 11
- 12 **3.** Connecting-Informing-Advancing
- 13
- 14
- 15
- 16
- 17
- 18
- 19
- 20



# Nebraska K-12 Public Education System

<b>Public School Districts</b>	<b>249</b>
Largest K-12 – Omaha	48,086
Smallest – Elba Public School	70
Districts with less than 390 students	143
Public School Students	289,411
Public School Teachers	21,767

Fewer Districts, Geographic Isolation



# County Census – 2000-2010

## Enrollment Decline

Non Metro Counties (84) - 1.8%

Metro Counties (9) +13.7%

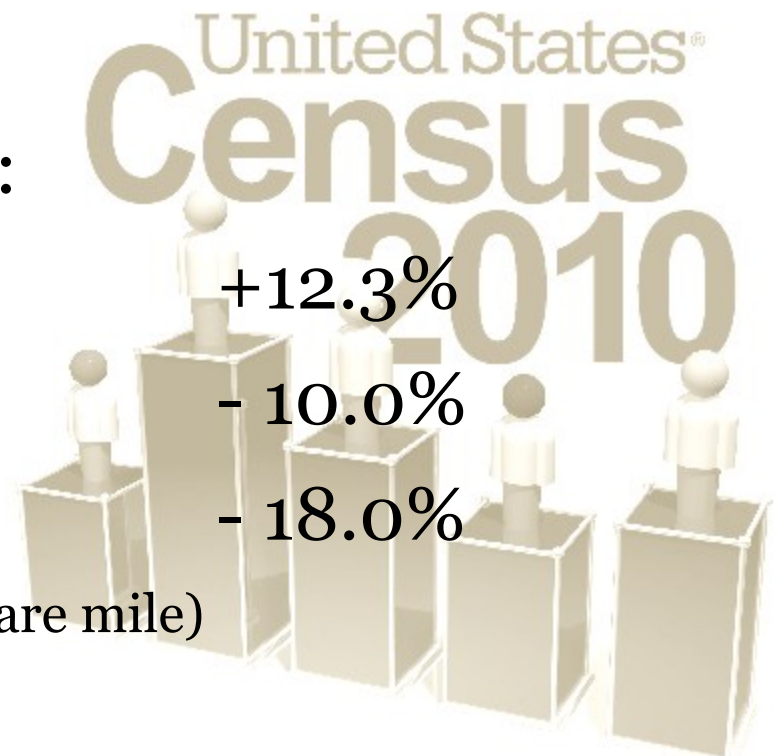
Youth 17 years and younger:

Lancaster, Douglas, Sarpy

62 Rural Counties

28 Frontier Counties\*

(\*Density of less than 6 people per square mile)





# Nebraska Public Education System

School Year	Total Enrollment	Total Minority	FRL	ELL	SPED
1990-1991	272,990	10%	NA	NA	12.0%
2000-2001	284,912	17.0%	30.4%	3.67%	15.3%
2010-2011	298,183	29.2%	42.6%	6.72%	15.3%
2012-2013	303,242	30.4%	44.1%	5.97%	15.5%

Fewer Supports, Greater Needs



# Nebraska School Districts with Less Than 390 Students

	Less than 390 Students	Total Membership
K-12 2011-12 Membership	32,411	287,997
Percentage	Number	Percentage
Minority	10.4%	29.5%
LEP Eligible	1.1%	6.5%
Special Education	15.4	14.0%
Free & Reduced Lunch Eligible	42.7%	43.8%



# Nebraska School Districts with Less Than 390 Students

	Less than 390 Students	Total Membership
K-12 2011-12 Membership	32,411	287,997
% That Meet or Exceed	Number	Percentage
NeSA Reading	75.29%	74.21%
NeSA Math	71.17%	67.39%
NeSA Science	75.25%	66.93%
NeSA Writing	71.87%	73.32%
2012 4-year Cohort Graduation Rate	93.10%	87.62%



# Rural Community and Rural Education Issues

- Funding
- Capacity
- Health
- Environment
- Economic Development
- Technology



-John Hill, NREA





# Rural Education Challenges

School Finances

Student Assessment

Building and Grounds

Security

Food Services

Extra Curricular Activities

Transportation Services

Instructional Support

Student Enrollment

School Accountability

Instructional Programs

Administration Retention

Family Support

Teacher Retention

Support Staff

Community Support

Michael Montgomery, Leigh  
Community Schools (2010)



# Rural Education Challenges

School  
Finance

Enrollment

Distance

People

Safety &  
Security



# Nebraska Public Schools Mission

“All students high school graduates, college and career ready.”





# Education And Jobs

All U.S. job growth in last 40 years occurred in jobs requiring at least some college or a college degree.





# Nebraska Jobs Projections

- 66% of all jobs will require some postsecondary training beyond high school in the next decade
- US needs 20,000,000 additional workers with some college or college degrees in next 15 years

-June 2011 Study  
Georgetown University



# Federal Expectations (ESEA)

- CCR Standards
- Test and Data Driven Accountability
- Effective Teachers/Leaders
- "Turnaround" methods
- Lack of rural education perspective

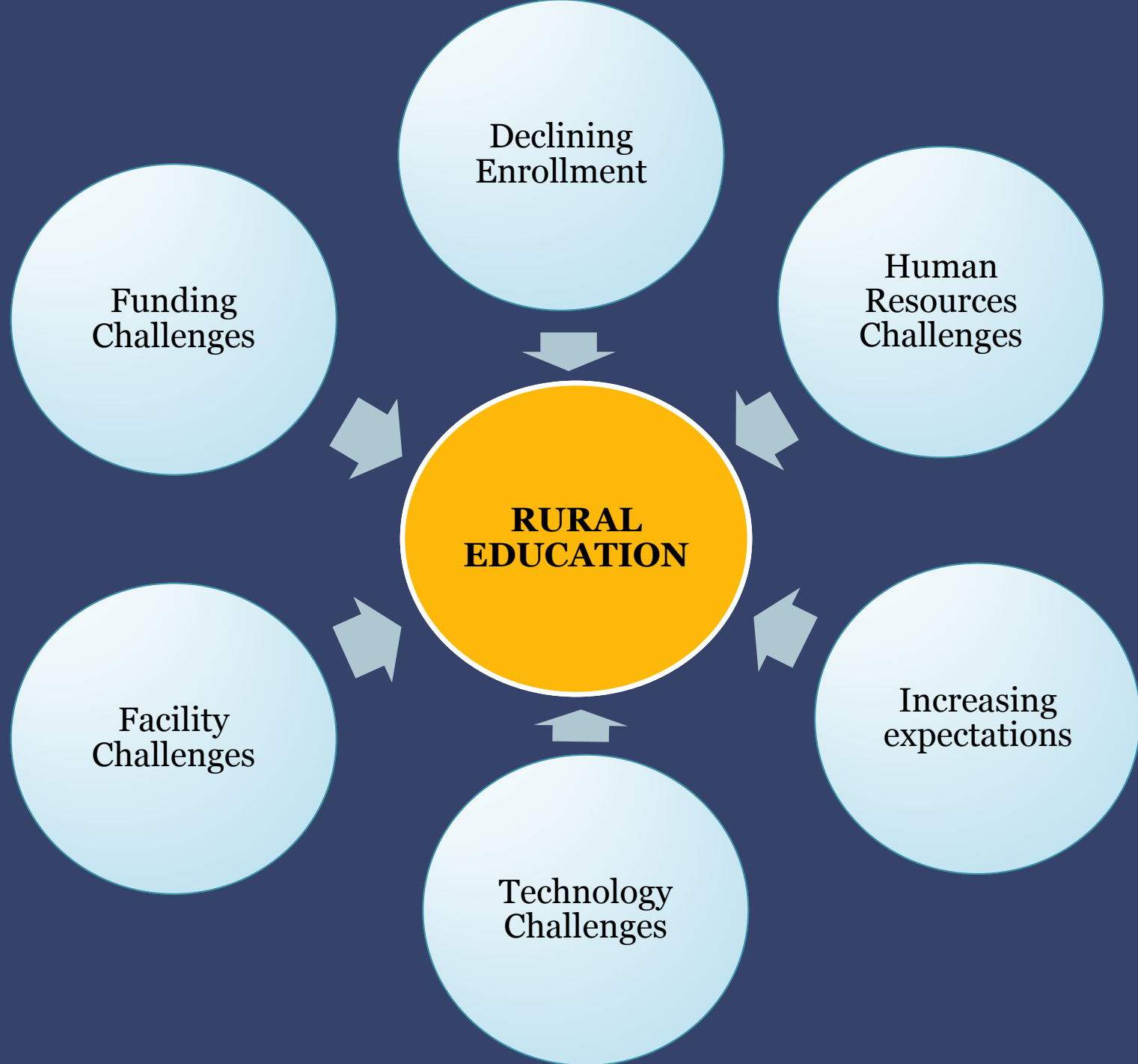




# COMPETING FOR RESOURCES

- Old outnumber the young
- Other governmental priorities
- More minority
- More poverty
- Greater needs and fewer supports
- Early education, wrap around services, extended time . . .









# Addressing the challenges

"Politics, when all is said and done, is a business of belief and enthusiasm. Hope energizes, doubt destroys. Hopelessness is not our heritage."

- Hugh Sidey, 1979

RURAL VALUES  
AND CULTURE



# Rural Values

- Self-reliance
- Commitment to family and community
- Hard work
- Sense of Responsibility

*Self Reliance*

*Hard Work*

*Responsibility*

*Commitment*



# Rural Education Culture for 21<sup>st</sup> Century

Teachers

Data

A Plan

Alignment of Efforts

Persistence over time



# Teachers

- Selection, Induction, Development
- "Key" to all that defines education success
- Quantity and Quality
- Performance-based evaluation/certification
- Professional Development





# Teaching for 21<sup>st</sup> Century

"If we teach today as we taught yesterday,  
we rob our children of their tomorrow."

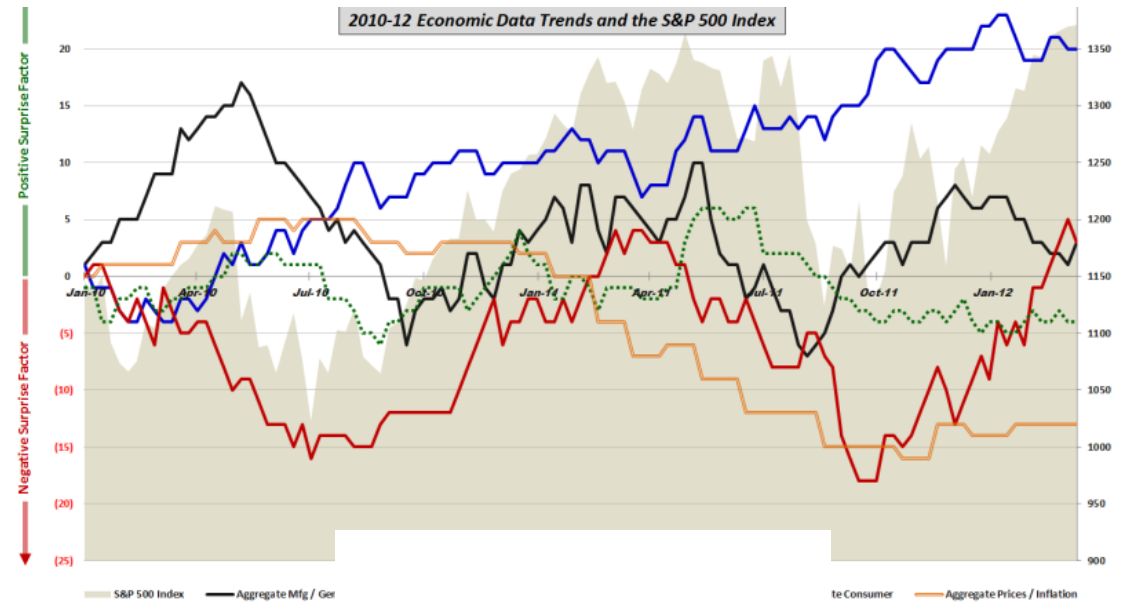
- J. Dewey





# Data

- Know Thyself
- Gaps
- Trends
- Comparative Group
- Accuracy and Use





# A Plan

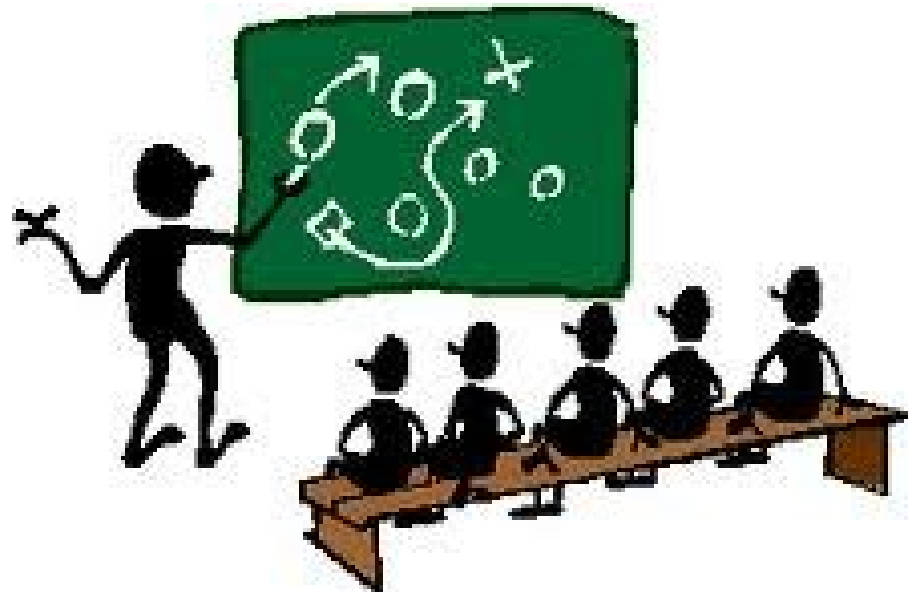
- Involvement of Stakeholders
- Targets
- Shared Accountability
- Commitment





# Alignment of Efforts - I

- Mission – "All"
- Standards taught
- Full, Rich Curriculum
- Attendance and Time
- Early Education







# Alignment of Efforts - II

- Professional Development
- School Board Duties
  - Advocacy
  - Relationships
  - Investments
  - Planning
  - Resources
- Technology





# Persistence Over Time

- Data Informed
- Small Steps
- Celebrations and Adjustments





# Connect

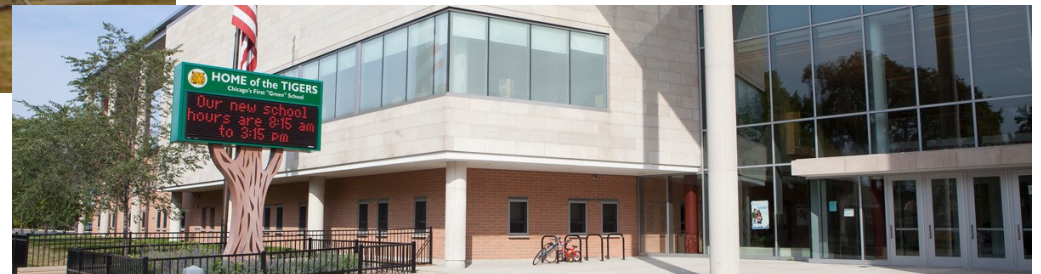
- Teacher/Leaders to Colleagues and Research
- Parents and Schools
- Communities for the present and the future
- With techno





# Inform

- Educators of the best practices in rural settings
- Stakeholders of the value of education investments regardless of zip code
- Policymakers about rural education-based needs and solutions





# Advance

- Engagement of parents and communities
- Levels of learning for all students
- Rural community development through education



# The Future

“The best way to predict the future is to invent it.”

-Alan Kay

