



Getting Ready

***Research to Practice:
Improving Family Engagement via Getting Ready***

Lisa Knoche, Tammi Hechtner-Galvin, Katie Zabel, Jenny Benson

Research Team, Key Personnel and Research Assistants:

Sue Sheridan; Lisa Knoche; Carolyn Pope Edwards; Christine Marvin; HyeonJin Yoon; Tammi Hechtner-Galvin; Courtney Boise; Sandra Scruggs; Katie Zabel; Cynthia Kritenbrink; Sue Bainter; Jenny Benson; Evelyn Estrada-Gonzalez, Janice Lee and others!

Funding Sources:

Interagency School Readiness Consortium
Institute of Education Sciences
Administration for Children and Families
Preschool Development Grant / CRSSA funding



Promotes children's learning and development by ***strengthening relationships*** and ***building competencies*** among families and educators in all early childhood settings



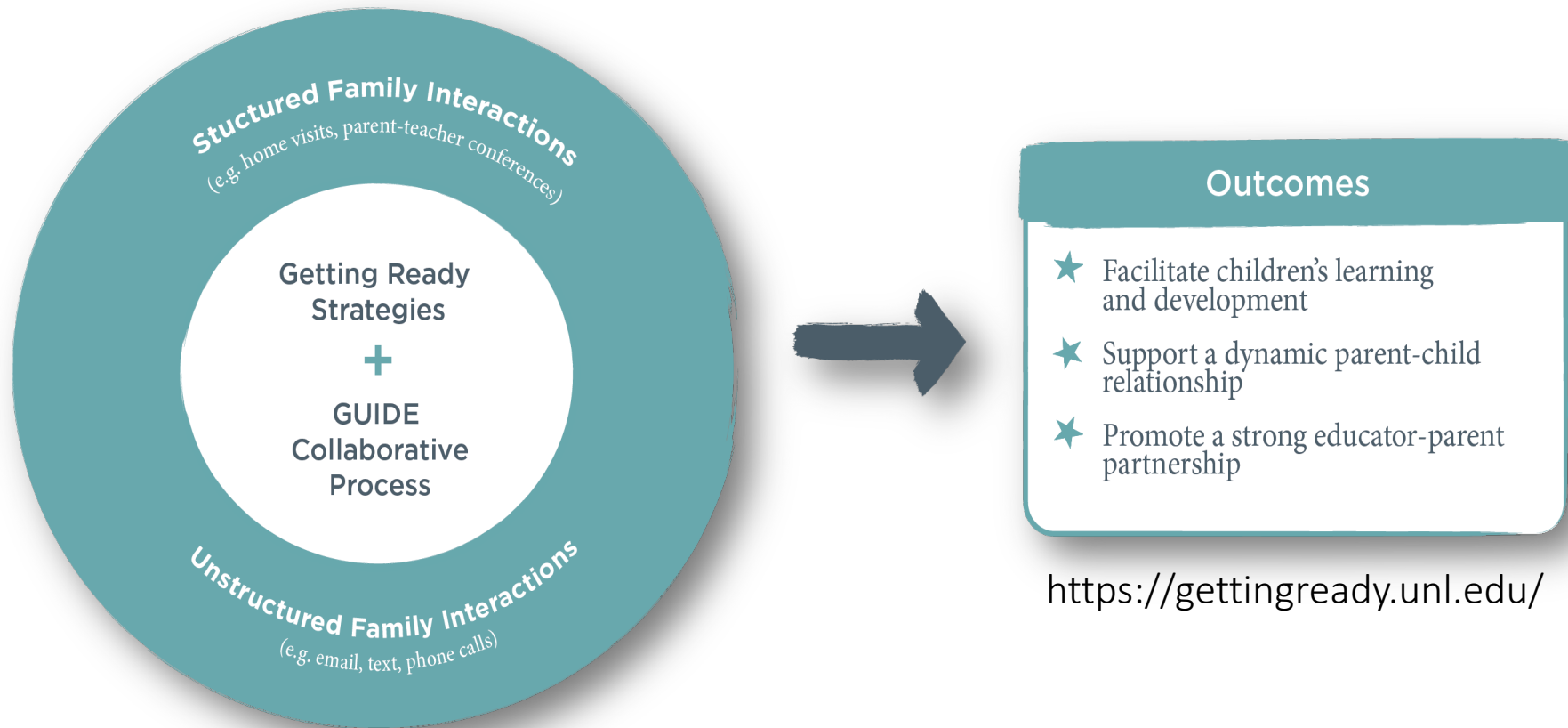
Getting Ready

promotes children's learning
and development by
strengthening relationships
and building competencies
for children, families and
professionals in all early
learning settings



Getting Ready Approach

Engaging Parents & Strengthening Partnerships



INTENTIONALITY

GUIDE
Collaborative
Process

Unstructured Family Interactions
(e.g. email, text, phone calls)

★ Promote a strong educator-parent partnership

<https://gettingready.unl.edu/>

 **Getting Ready Approach**

Engaging Parents & S

INTE



ITY

Unstructured
(e.g. email, text, p

strong educator-parent

gettingready.unl.edu/

Building the Evidence



Home-Based
Infant/Toddler

2004 - 2010



Center-Based
Preschool/K

2011-2016



Center-Based
Infant/Toddler

2016-2022



Home-Based
Part C

2017-ongoing



Community
Scale-Up

2019-ongoing

Community Scale-Up



Home-Based
Infant/Toddler

2004 - 2010



Center-Based
Preschool/K

2011-2016



Center-Based
Infant/Toddler

2016-2022



Home-Based
Part C

2017-ongoing



Community
Scale-Up

2019-ongoing

Community Scale-Up: Modifications



Getting Ready content remained consistent



Modification to training methods
→ move to virtual formats



Reduced timeline/dosage of implementation

Communit
Scale-Up
Modifica

What are implications of the changes?

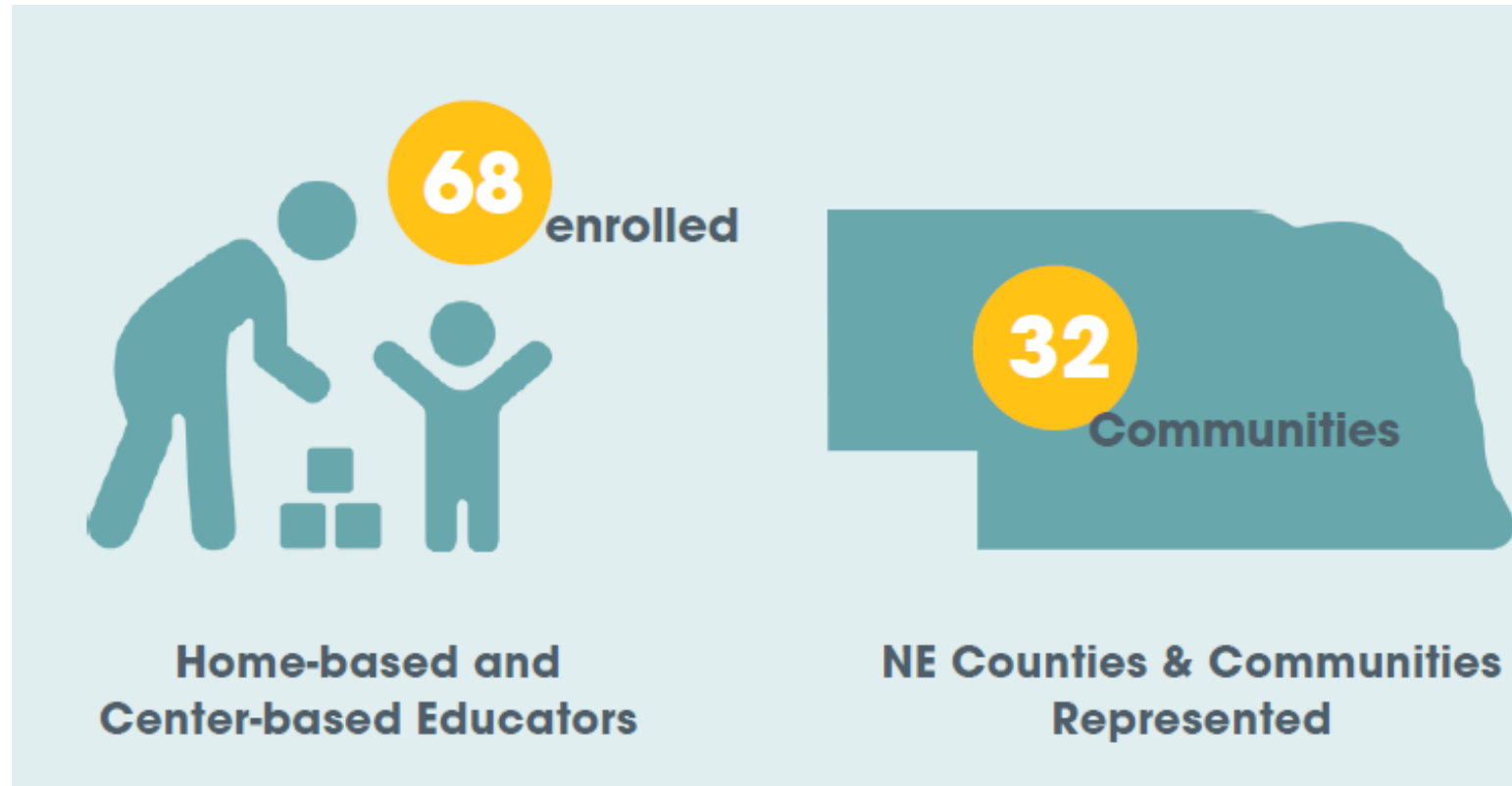
Do we still see positive outcomes for educators and families?

ained

ods

Implementation
message of

Community Scale-Up: Who was Involved?



After Getting Ready, have the *family engagement skills* of educators improved?

100%

of educators reported feeling more skilled in **communicating with families.**

100%

of educators reported feeling more skilled at **collaborating with families.**

100%

of educators reported feeling more skilled at **facilitating parent- child interactions.**

100%

of educators reported feeling more skilled at **child and/or family goal setting.**

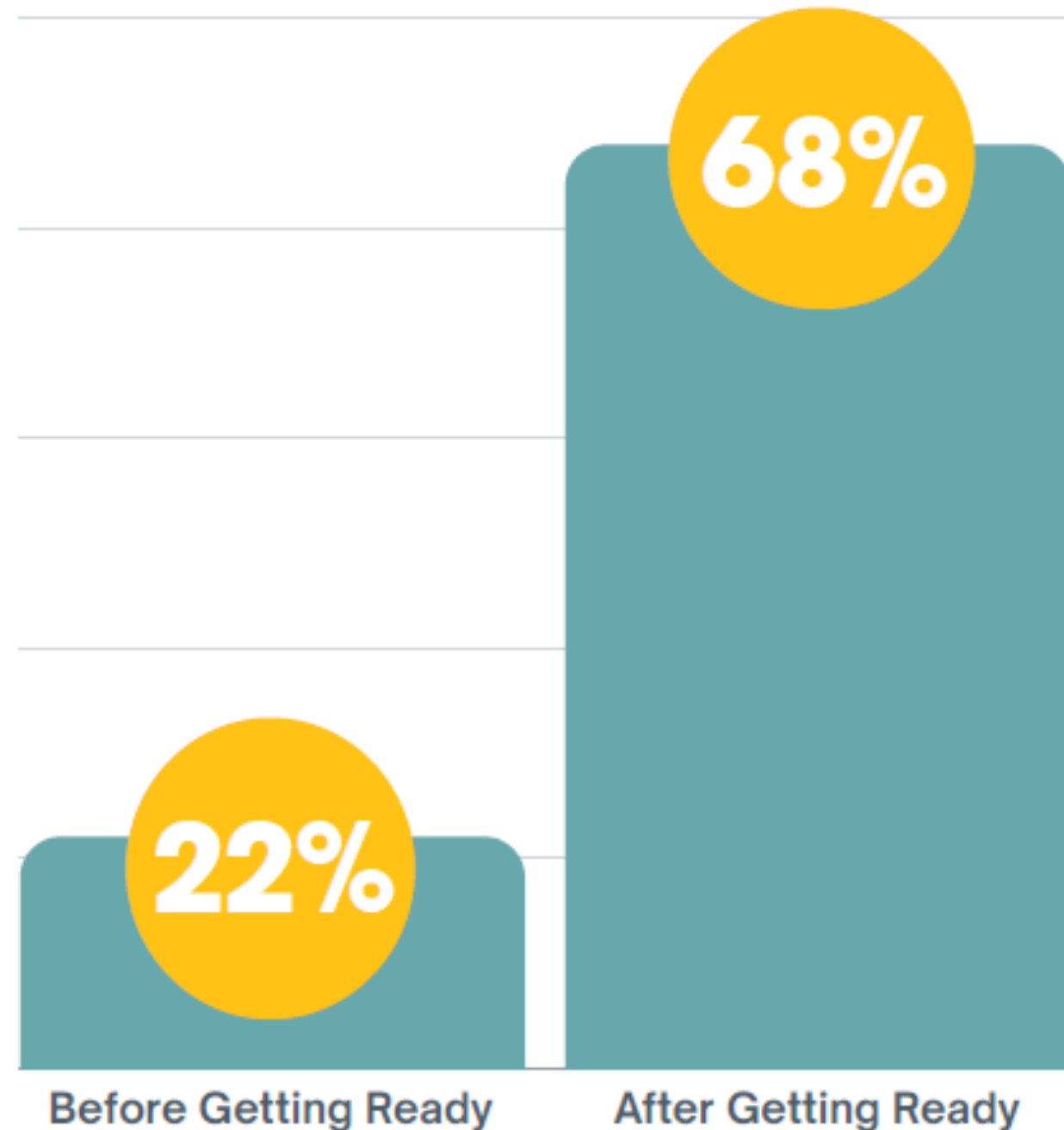
After Getting Ready, have
parent-educator partnerships improved?



94%

of educators reported improvements in their
partnerships with families.

*"I communicate more with the parents and
parents feel more comfortable communicating with
me."*



After Getting Ready, educators felt *more prepared* to interact with parents.

“I have more conversations with parents about improvements made or struggles.”

After Getting Ready, have *parent-child interactions* improved?



83%

of educators reported gains/improvements in parents' **interactions with their children.**

"Parents ask their child more questions when they find out what their child has done or accomplished in the center."

Take Aways

- [Getting Ready](#) is an evidence-based family engagement approach comprised of eight strategies and a collaborative structure for use by educators during family contacts in home visiting, family child care homes and center-based programs.
- Getting Ready has been modified for use in statewide system enhancement efforts (e.g., PDG and CRRSA).
- Data from scale up show that educators' **family engagement skills and partnerships** with families were positively affected, **educators felt more prepared** to work with families, and **parent-child interactions were enhanced**.
- Data collected from scale-up activities are consistent with previous studies.



GettingReady

Thank you!

Questions? Lisa Knoche, lknoche2@unl.edu or gettingready.unl.edu



NEBRASKA CENTER FOR RESEARCH ON
CHILDREN, YOUTH, FAMILIES & SCHOOLS



#GettingReady0-8
@UNL_CYFS